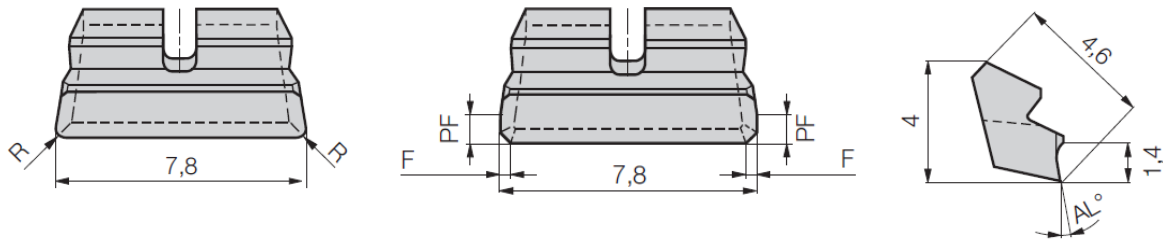




Insert W 3108-..... N Carbide / carbide coated / PCD



with radius (R) or with chamfer (F) and wiper geometry (PF)

Carbide						Part nr. 20295	Part nr. 20494	Part nr. 20496	Part nr. 20498
						uncoated	coated	coated	coated
Code	Drawing nr.	R	AL°	F	PF	K10	G12	G16	G26
31,080	W3108-0314 1645N		16	0.3x45°	0.9	●	○	○	○
31,081	W3108-0414 1620N	0.4	16			●	○	○	○
31,082	W3108-0314 1045N		10	0.3x45°	0.9	○	●	●	●
31,083	W3108-0414 1000N	0.4	10			○	●	●	●
PCD						Part nr. 20299	Part nr. 20300		
						PCD10	PCD30		
Code	Drawing nr.	R	AL°	F	PF				
31,080	W3108-0314 1045N		10	0.3x45°	0.9	●	○		
31,081	W3108-0314 0045N		0	0.3x45°	0.9	●	○		
31,082	W3108-0414 0000N	0.4	0			●	○		
31,083	W3108-0814 0000N	0.8	0						

● ex stock ○ in short time available

We reserve the right to make technical changes.