



Simple and Fast Measuring and Presetting of Standard Tools

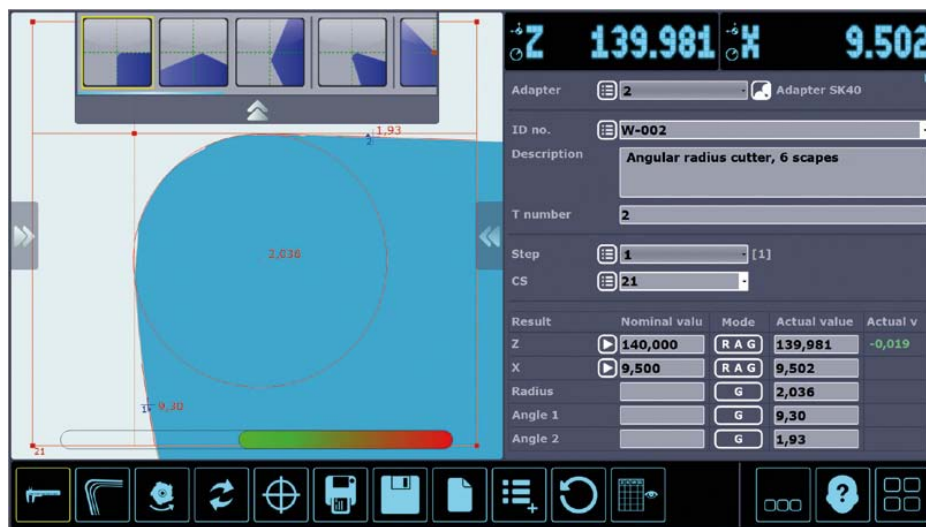
»pilot 1.0«

The new image processing technology »pilot 1.0« offers all functions for presetting and measuring standard tools quickly and easily. For instance Automatic cutter shape and measuring range detection, navigation system

»compass«, projector function and cutting edge inspection, »cris360°« to determine the effective cutting area of tools, and a clear representation of the tool cutting edge on a 13.3" panel PC.

- ✓ Easy to Operate, fast Processing
- ✓ Less Machine Down-time
- ✓ Increased Productivity
- ✓ Reduced Rejects

The Start to Professional Presetting and Measurement of Tools



»smile / pilot 1.0« is robust, and can be used on the shop floor next to CNC machines, in processing and test centers, or in measurement rooms.



We reserve the right to make technical changes.



Simple and Fast Measuring and
Presetting of Standard Tools

»pilot 1.0«

With »pilot 1.0«, Preset and Measure Tools Efficiently Without Great Training Expenses



Take advantage of easy operation, real time presentation of the measurement results in the camera field of vision, and of a workshop-compatible device version.

All standard measuring functions are available, including longitudinal and cross dimensions, radius, two-angle technology, and concentricity and run-out.

Tool presetting and measuring device »smile 400« with image processing technology »pilot 1.0«



We reserve the right to make technical changes.



Simple and Fast Measuring and Presetting of Standard Tools

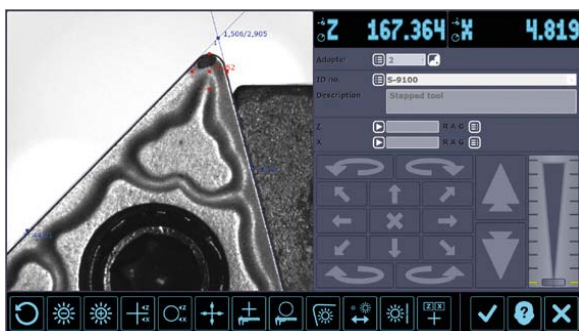
»pilot 1.0«



Automatic Cutter Shape and Measuring Range Detection

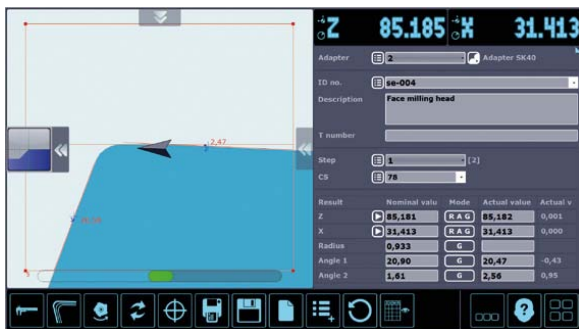
Clear graphical and numerical representation of results within seconds.

Over 90 different cutter shapes.



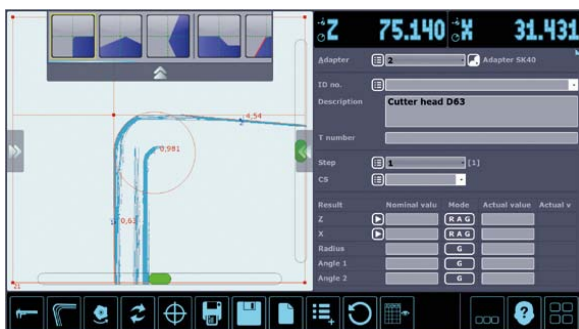
Projector Function and Cutting Edge Inspection

For wear inspection and measurement of cutting edge chipping.



Navigation System »compass«

For an easy and comfortable safe positioning of the camera's target values on the tool.



Software Function »cris360°« to determine and measure the maximum contour of the tool

For the real representation of the effective contour, particularly for multi-insert tools.

Ident-Nr.	W1-009	ZOLLER			
Bez.	Schafffräser D36 R2.0				
T-Nr.	7	Adp.Nr.	3		
ZRA	186,157	XRA	18,054	Ra	0,185
W1	0,13	W2	0,09	PL	0,000
RL	0,000				

Label Printing Function

For all important information and effective data of the tool.

We reserve the right to make technical changes.