

The Premium Presetting
and Measuring Machine
»venturion 450«

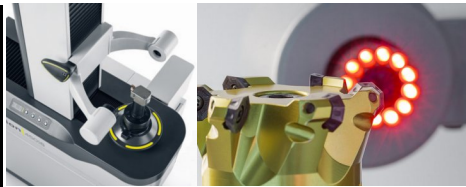
The premium presetting and measuring machine for tools of all kinds, ZOLLER »venturion 450« impresses with maximum ergonomics and strong optics. Insert a tool, push a button, finished. That's how simple it is to clamp tools from ZOLLER — always with the same precision, accurate and reliable to the last μm . Measuring tools is just the beginning. Exchanging generated data seamlessly with all production stations and profiting from consistent, μm -precise values from work preparation to the CNC machine.



- ✓ Available in up to seven selectable measuring ranges in Z and X
- ✓ High-precision spindle »ace«
- ✓ High precision spindle ISO 50 with integrated calibration edges, locking device 4 x 90°, spindle brake
- ✓ Membrane keyboard for power-operated spindle brake and spindle lock
- ✓ Lightweight metal construction with optimal thermal conductive capacity for use in workshops
- ✓ Electronic fine adjustment of the X and Z axis
- ✓ »eQ« ergonomic one-hand control handle
- ✓ ZOLLER image processing software »pilot 3.0«

- ✓ Heidenhain glass scales for high measuring accuracy
- ✓ CCD camera with telecentric lens
- ✓ Dynamic cross hairs over entire measuring window
- ✓ Analog focusing display for focusing the tool cutting edge
- ✓ Automatic cutting edge recognition, also greater than 90°
- ✓ Integrated 360° LED incident light for cutting edge inspection
- ✓ Control unit »cockpit« / Manual projector function / Adapter and tool management
- ✓ Zero point monitoring for process reliability
- ✓ Numerous measuring programs, for example, concentricity and run-out
- ✓ Machine table

We reserve the right to make technical changes.



| Technical Data | Measuring range Z | Measuring range X | Diameter | Snap gauge ϕ |
|-----------------|---|-----------------------------|------------------------------|--------------------------------|
| »venturion 450« | 450-620*-820* mm / 17.7-24.4*-32.3** | 210-310* mm / 8.3-12.2** | 420-620* mm / 16.5-24.4** | 100-70-40 mm / 3.9-2.8-1.6" |

Note: The quoted measuring range may be reduced under circumstances when using adapters and tool posts.
The maximum tool diameter X is reduced when selecting the Snap gauge ϕ
* optionally available: the snap gauge diameter will be reduced accordingly.

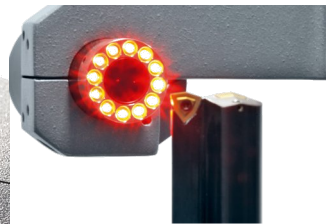


»pilot 3.0« 24"

State-of-the-art image processing technology



Autofocus and ROD encoder



Cutting edge inspection



Snap gauge



Storage trays for adapters



Length limit system



Tool identification



Color laser printer



Label printer



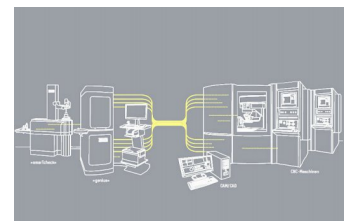
»ZipCode« with labels



Control unit »cockpit«

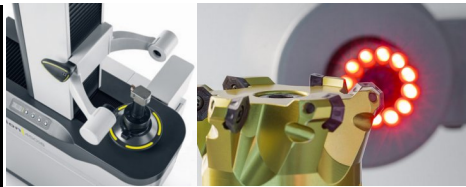


USB Camera



Data transmission

We reserve the right to make technical changes.



Adapter or tool trolley



Standing aid



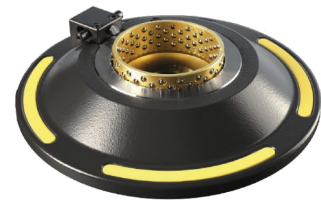
Protective cover



SK 50 high-precision spindle



High-precision spindle tension element clamping



»ace« high-precision spindle



SK 25 - 60 steep taper adapter



HSK 25 - 160 hollow shank taper adapter



VDI 16 - 80 adapter



Capto C 3 - 10 adapter



KM 32 - 100 adapter



Hydro-expansion clamping adapter



SK 25 - 60 attachment holder



HSK 25 - 160 hollow shank attachment holder



Capto C 3 - 10 attachment holder



VDI 16 - 60 attachment holder



KM 32 - 63 attachment holder



Hydro-expansion chuck attachment holder

We reserve the right to make technical changes.