



Toolholders with HSK-tapers shank DIN 69893-1

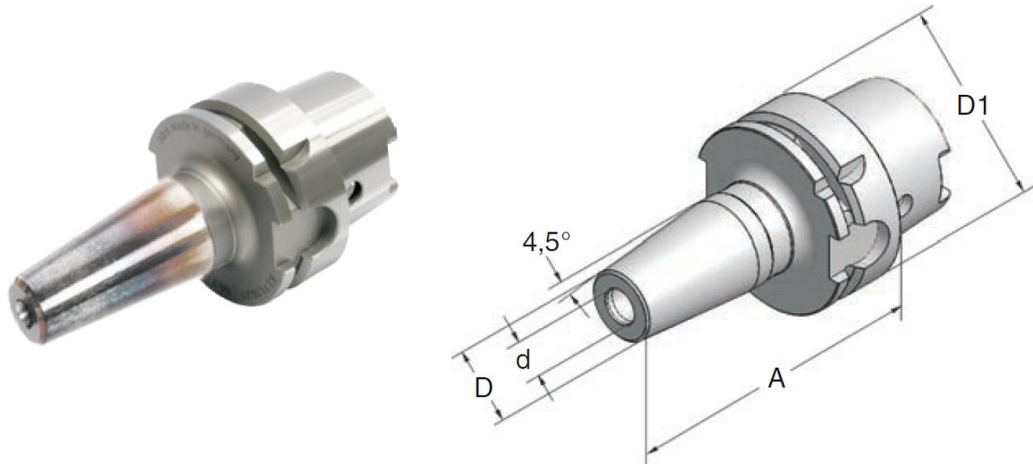
Shrinking chucks **without coolant channels DIN 69882-8**

Concentricity from the taper to the holding part < 0.005

Base-body balanced, G 2.5 - 20,000 r.p.m.


Special executions / inch-executions on inquiry

HSK-A32, HSK-A50 + HSK-C50 on inquiry



HSK - A

HSK - A 40

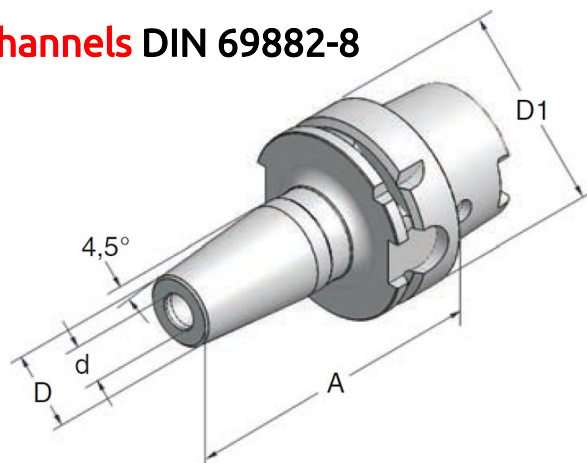
	Art.-Nr.	Type	D1	A	d	D
	40.11.03.31	HSK-A40x03Sx	65	40	65	3
40.11.04.31	HSK-A40x04Sx	65	40	65	4	11
40.11.06.31	HSK-A40x06Sx	65	40	65	6	21
40.11.08.31	HSK-A40x08Sx	65	40	65	8	21
40.11.10.31	HSK-A40x10Sx	65	40	65	10	24
40.11.12.31	HSK-A40x12Sx	70	40	70	12	24
40.11.14.31	HSK-A40x14Sx	70	40	70	14	27
40.11.16.31	HSK-A40x16Sx	75	40	75	16	27
40.11.20.31	HSK-A40x20Sx	75	40	75	20	27

We reserve the right to make technical changes.

Shrinking chucks **without coolant channels** DIN 69882-8



HSK - A



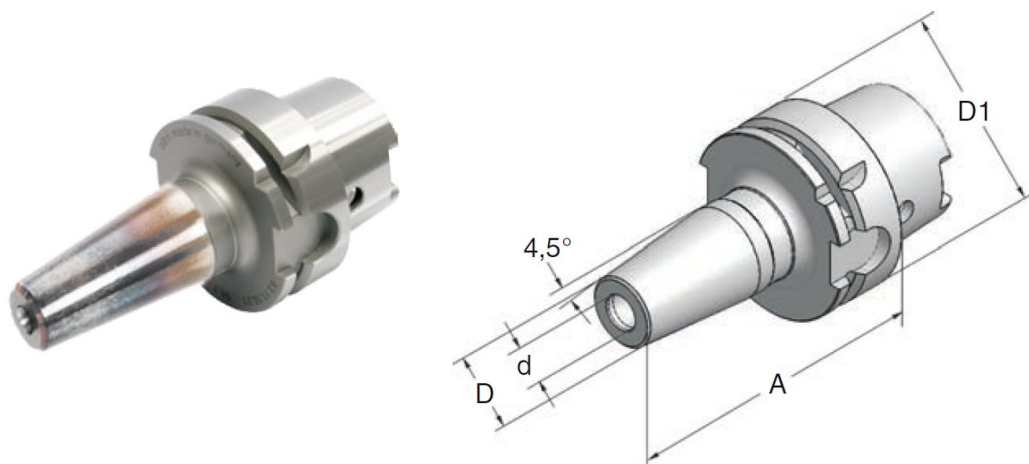
HSK - A 63



Art.-Nr.	Type	D1	A	d	D
63.11.03.31	HSK-A63x03Sx 80	63	80	3	10
63.11.04.31	HSK-A63x04Sx 80	63	80	4	11
63.11.06.31	HSK-A63x06Sx 80	63	80	6	21
63.11.06.32	HSK-A63x06Sx130	63	130	6	21
63.11.06.33	HSK-A63x06Sx160	63	160	6	21
63.11.08.31	HSK-A63x08Sx 80	63	80	8	21
63.11.08.32	HSK-A63x08Sx130	63	130	8	21
63.11.08.33	HSK-A63x08Sx160	63	160	8	21
63.11.10.31	HSK-A63x10Sx 85	63	85	10	24
63.11.10.32	HSK-A63x10Sx130	63	130	10	24
63.11.10.33	HSK-A63x10Sx160	63	160	10	24
63.11.12.31	HSK-A63x12Sx 90	63	90	12	24
63.11.12.32	HSK-A63x12Sx130	63	130	12	24
63.11.12.33	HSK-A63x12Sx160	63	160	12	24
63.11.14.31	HSK-A63x14Sx 90	63	90	14	27
63.11.14.32	HSK-A63x14Sx130	63	130	14	27
63.11.14.33	HSK-A63x14Sx160	63	160	14	27
63.11.16.31	HSK-A63x16Sx 95	63	95	16	27
63.11.16.32	HSK-A63x16Sx130	63	130	16	27
63.11.16.33	HSK-A63x16Sx160	63	160	16	27
63.11.18.31	HSK-A63x18Sx 95	63	95	18	33
63.11.18.32	HSK-A63x18Sx130	63	130	18	33
63.11.18.33	HSK-A63x18Sx160	63	160	18	33
63.11.20.31	HSK-A63x20Sx100	63	100	20	33
63.11.20.32	HSK-A63x20Sx130	63	130	20	33
63.11.20.33	HSK-A63x20Sx160	63	160	20	33
63.11.25.31	HSK-A63x25Sx100	63	100	25	44
63.11.25.32	HSK-A63x25Sx130	63	130	25	44
63.11.25.33	HSK-A63x25Sx160	63	160	25	44
63.11.32.31	HSK-A63x32Sx100	63	100	32	44
63.11.32.32	HSK-A63x32Sx130	63	130	32	44

We reserve the right to make technical changes.

Shrinking chucks **without coolant channels** DIN 69882-8



HSK - A

HSK - A 100

Base-body balanced,
G 2.5 - 15,000 r.p.m.



Art.-Nr.	Type	D1	A	d	D
100.11.06.31	HSK-A100x06Sx 85	100	85	6	21
100.11.06.313	HSK-A100x06Sx160	100	160	6	21
100.11.08.31	HSK-A100x08Sx 85	100	85	8	21
100.11.08.313	HSK-A100x08Sx160	100	160	8	21
100.11.10.31	HSK-A100x10Sx 90	100	90	10	24
100.11.10.313	HSK-A100x10Sx160	100	160	10	24
100.11.12.31	HSK-A100x12Sx 95	100	95	12	24
100.11.12.313	HSK-A100x12Sx160	100	160	12	24
100.11.16.31	HSK-A100x16Sx100	100	100	16	27
100.11.16.313	HSK-A100x16Sx160	100	160	16	27
100.11.20.31	HSK-A100x20Sx105	100	105	20	33
100.11.20.313	HSK-A100x20Sx160	100	160	20	33
100.11.25.31	HSK-A100x25Sx115	100	115	25	44
100.11.25.313	HSK-A100x25Sx160	100	160	25	44
100.11.32.31	HSK-A100x32Sx120	100	120	32	44

HSK - C

HSK - C 40



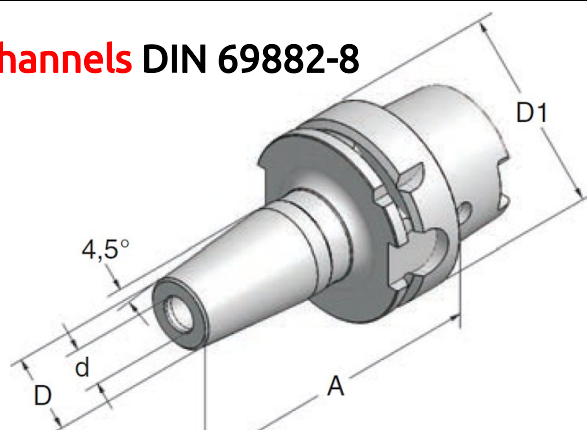
Art.-Nr.	Type	D1	A	d	D
40.14.06.31	HSK-C40x06Sx 65	40	65	6	21
40.14.08.31	HSK-C40x08Sx 65	40	65	8	21
40.14.10.31	HSK-C40x10Sx 65	40	65	10	24
40.14.12.31	HSK-C40x12Sx 70	40	70	12	24
40.14.14.31	HSK-C40x14Sx 70	40	70	14	27
40.14.16.31	HSK-C40x16Sx 75	40	75	16	27

We reserve the right to make technical changes.

Shrinking chucks **without coolant channels** DIN 69882-8



HSK - E



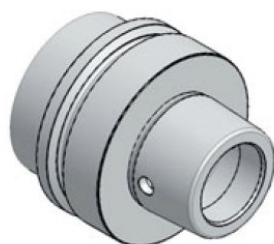
HSK - E 40



HSK - F

Art.-Nr.	Type	D1	A	d	D
40.12.03.31	HSK-E40x03Sx 65	40	65	3	10
40.12.04.31	HSK-E40x04Sx 65	40	65	4	11
40.12.06.31	HSK-E40x06Sx 65	40	65	6	21
40.12.08.31	HSK-E40x08Sx 65	40	65	8	21
40.12.10.31	HSK-E40x10Sx 65	40	65	10	24
40.12.12.31	HSK-E40x12Sx 70	40	70	12	24
40.12.14.31	HSK-E40x14Sx 70	40	70	14	27
40.12.16.31	HSK-E40x16Sx 75	40	75	16	27
40.12.20.31	HSK-E40x20Sx 75	40	75	20	27
HSK - E 50					
50.12.06.31	HSK-E50x06Sx 80	50	80	6	21
50.12.08.31	HSK-E50x08Sx 80	50	80	8	21
50.12.10.31	HSK-E50x10Sx 85	50	85	10	24
50.12.12.31	HSK-E50x12Sx 90	50	90	12	24
50.12.14.31	HSK-E50x14Sx 90	50	90	14	27
50.12.16.31	HSK-E50x16Sx 95	50	95	16	27
50.12.20.31	HSK-E50x20Sx 95	50	95	20	33
50.12.25.31	HSK-E50x25Sx100	50	100	25	38

HSK - F 63



Art.-Nr.	Type	D1	A	d	D
63.13.06.31	HSK-F63x06Sx 80	63	80	6	21
63.13.08.31	HSK-F63x08Sx 80	63	80	8	21
63.13.10.31	HSK-F63x10Sx 85	63	85	10	24
63.13.12.31	HSK-F63x12Sx 90	63	90	12	24
63.13.14.31	HSK-F63x14Sx 90	63	90	14	27
63.13.16.31	HSK-F63x16Sx 95	63	95	16	27
63.13.20.31	HSK-F63x20Sx 95	63	95	20	33
63.13.25.31	HSK-F63x25Sx100	63	100	25	44
63.13.32.31	HSK-F63x32Sx100	63	100	32	44

We reserve the right to make technical changes.