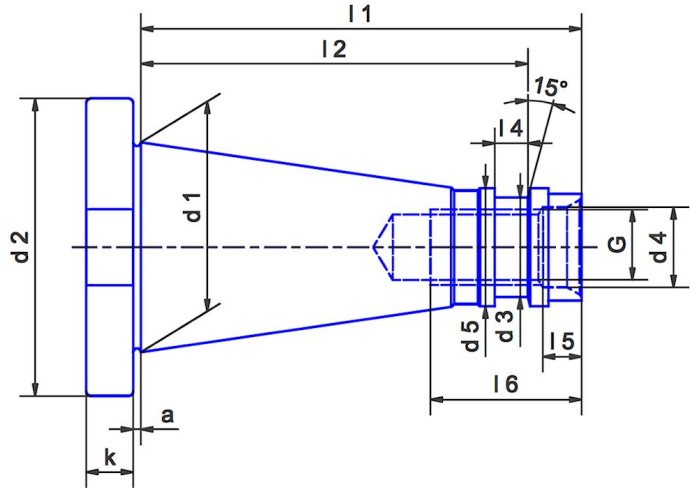
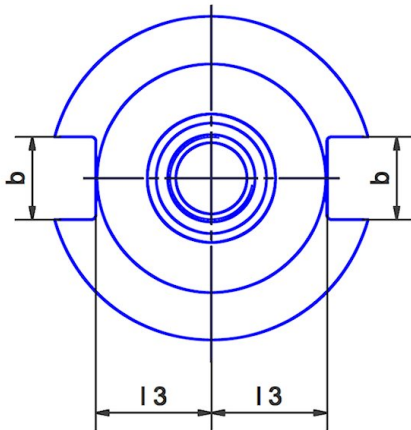




## ISO Taper-toolholders

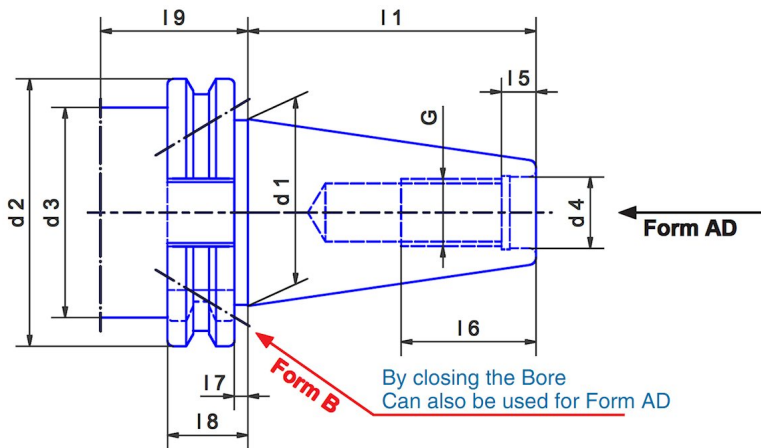
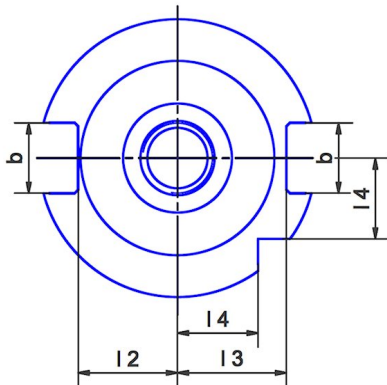
Taper angle AT3, Concentricity from the taper to the holding part < 0.005

### DIN 2080 40.00. ...



SK	d1	d2	d3	d4	d5	G	a	b	l1	l2	l3	l4	l5	l6	k
30	31.75	50.0	16.5	13	17.10	M 12	1.6	16.1	68.4	51.4	16.2	3	5.5	24	8
40	44.45	63.0	21.1	17	25.00	M 16	1.6	16.1	93.4	82.0	22.5	7	8.2	32	10
50	69.85	97.5	32.0	26	39.29	M 24	3.2	25.7	126.8	115.0	35.3	13	11.5	47	12

### DIN 69871 40.01. ...



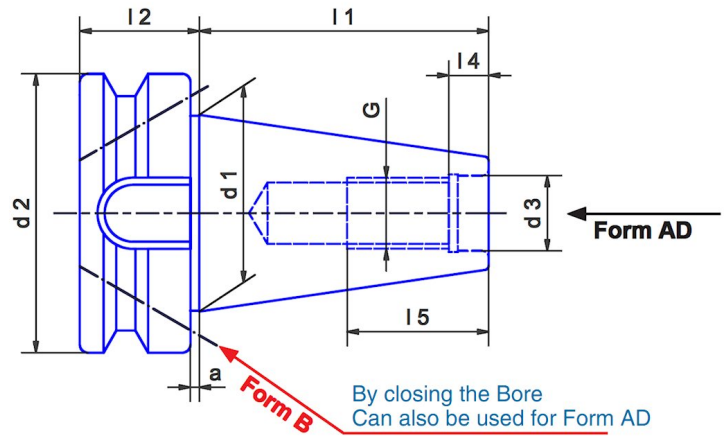
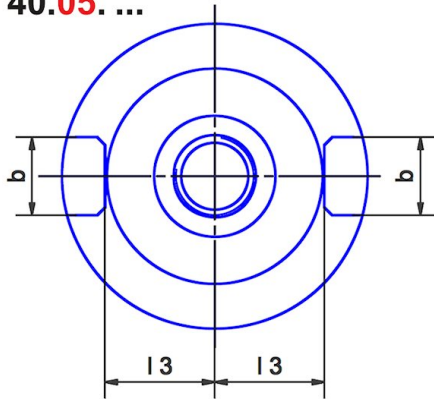
SK	d1	d2	d3	d4	G	b	l1	l2	l3	l4	l5	l6	l7	l8	l9
25	25.40	37.00	-	8.5	M 8	12.2	39.70	12.9	12.9	-	5.5	18	-	8.0	-
30	31.75	50.00	45	13	M 12	16.1	47.80	16.3	18.8	15.0	5.5	24	3.2	19.1	35
40	44.45	63.55	50	17	M 16	16.1	68.40	22.7	25.0	18.5	8.2	32	3.2	19.1	35
45	57.15	82.55	63	21	M 20	19.3	82.70	29.1	31.3	24.0	10.0	40	3.2	19.1	35
50	69.85	97.50	80	25	M 24	25.7	101.75	35.5	37.7	30.0	11.5	47	3.2	19.1	35

We reserve the right to make technical changes.

# ISO Taper-toolholders

## MAS BT (JIS B 6339)

40.05. ...



BT	d1	d2	d3	G	a	b	l1	l2	l3	l4	l5
15	19.05	27	6.5	M 6	1.5	8.1	27.0	12.5	9.7	5.0	20
20	22.23	30	8.5	M 8	1.5	8.1	25.0	12.5	11.4	6.5	18
25	25.40	35	8.5	M 8	2.0	9.7	40.0	15.1	12.9	6.5	20
30	31.75	46	12.5	M 12	2.0	16.1	48.4	22.0	16.3	7.0	24
35	38.10	53	13.0	M 12	2.0	14.0	56.5	22.0	19.3	7.0	27
40	44.45	63	17.0	M 16	2.0	16.1	65.4	27.0	22.6	8.2	30
45	57.15	85	21.0	M 20	3.0	19.3	82.8	33.0	29.1	9.0	40
50	69.85	100	25.0	M 24	3.0	25.7	101.8	38.0	35.4	11.0	45

We reserve the right to make technical changes.