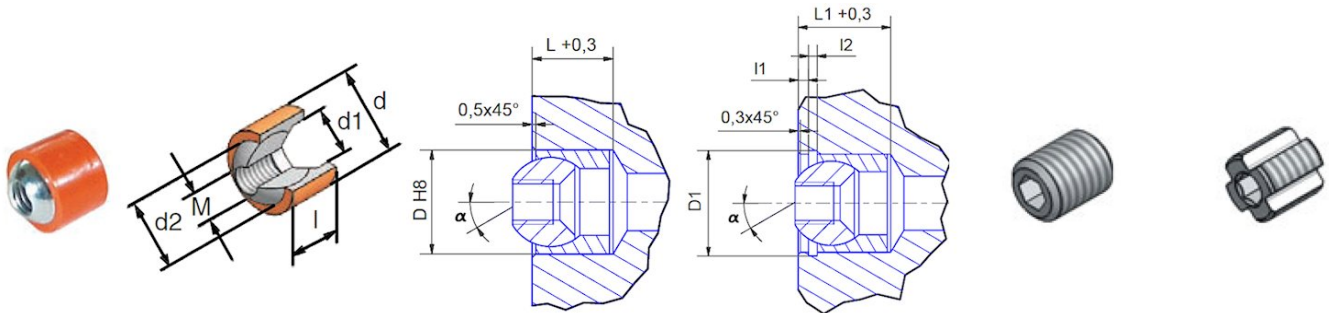


Coolant nozzles

Coolant nozzles for assembly by force fitting

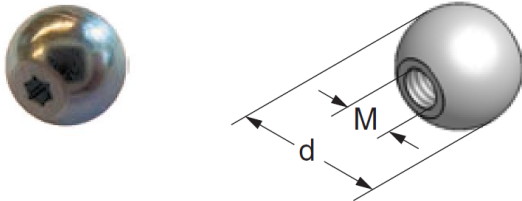


Art.-Nr.	d	d1	d2	M	l	l1	l2	D	D1	L	L1	α	Threaded pin	Nozzle
													Art.-Nr.	Art.-Nr.
1005	6	4.0	4	ø2.5	4.5	-	-	6	-	5.0	-	30°		
1007-5	8	5.5	6	ø2	6.0	1.5	0.8	8	8.8	6.5	8.5	30°		
1007	8	5.5	6	M3.5	6.0	1.5	0.8	8	8.8	6.5	8.5	30°	1021 M3.5x4	
1008	10	5.5	7	M4	7.0	1.5	0.8	10	10.8	8.0	9.5	30°	1024 M4 x4	
1008-T10	10	5.5	7	TORX 10	7.0	1.5	0.8	10	10.8	8.0	9.5	40°		
1010	12	7.5	9	M5	8.0	1.5	1.0	12	13.0	9.0	10.5	30°	1025 M5 x5	1035 M5x5
1010-4	12	7.5	9	M6	8.0	1.5	1.0	12	13.0	9.0	10.5	30°	1026 M6 x6	1036 M6x6
1010-T10	12	7.5	9	TORX 10	8.0	1.5	1.0	12	13.0	9.0	10.5	40°		
1012	14	9.0	11	M6	10.0	1.5	1.0	14	15.0	11.0	12.5	40°	1026 M6 x6	1036 M6x6
1012-4	14	9.0	11	M6x0.75	10.0	1.5	1.0	14	15.0	11.0	12.5	40°		
1012-5	14	9.0	11	M7	10.0	1.5	1.0	14	15.0	11.0	12.5	30°	1027 M7 x7	1037 M7x7
1014	16	10.0	13	M7	11.0	2.0	1.6	16	17.6	12.0	14.6	40°	1027 M7 x7	1037 M7x7
1014-3	15	10.0	13	M7	11.0	2.0	1.6	15	16.6	12.0	14.6	40°	1027 M7 x7	1037 M7x7

We reserve the right to make technical changes.

Coolant nozzles

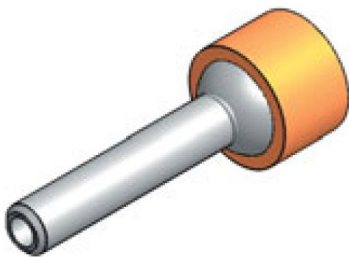
Injection balls



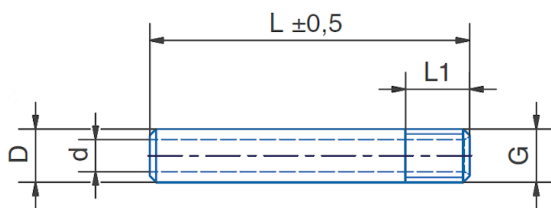
Art.-Nr.	d	M
05.920	5	M2.5
07.920	7	M3.5
08.920	8	M4
10.920	10	M5
10.920-4	10	M6
12.920	12	M6
12.920-5	12	M7
14.920	14	M7
10.921	10	TORX 10

Injection tube Cu

Delivery without coolant nozzle



Art.-Nr.	(Typ Nr.)	G	D	d	L	L1
10086	(1008)	M4	4	2.5	50	5
10106	(1010)	M5	5	3.0	50	6
10126	(1012/1010-4)	M6	6	4.0	50	6
10146	(1014/1012-5)	M7	7	4.5	50	6



We reserve the right to make technical changes.